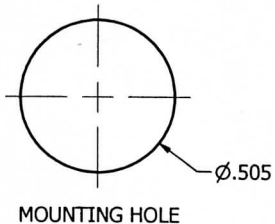


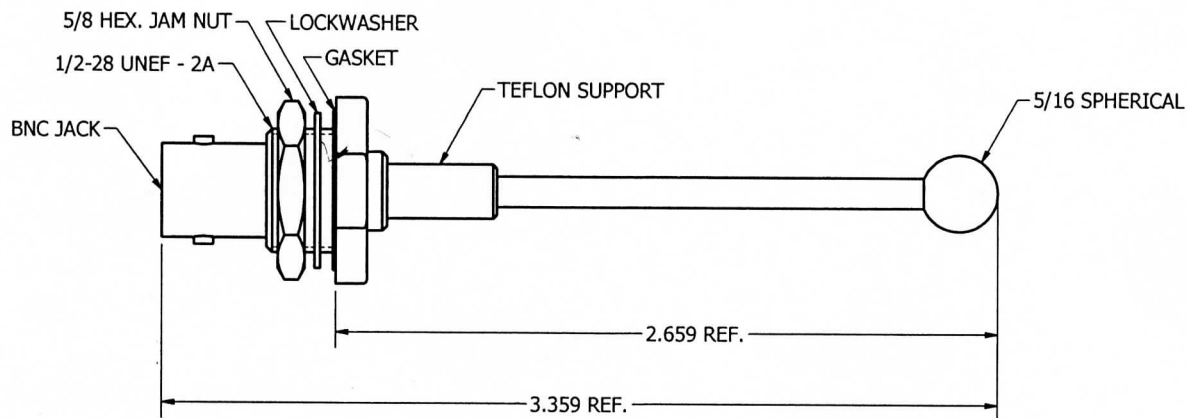
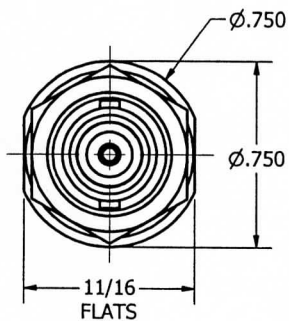
IMPORTANT

ANY INFORMATION IN ANY WAY WHICH PERTAINS TO THIS PART SHALL BE TREATED AS PROPRIETARY AND ITS USE OR DISCLOSURE IN WHOLE OR PART FOR PURPOSES OTHER THAN DIRECT FULFILLMENT OF CONTRACTS WITH THIS COMPANY, WITHOUT ITS WRITTEN CONSENT IS PROHIBITED.



**PRELIMINARY**

REVISION HISTORY			
REV	DESCRIPTION	DATE	APPROVED
1	PENDING	2/27/2015	SW



NOTS:

1. FREQUENCY; RESONANT, 978 MHz, VSWR NO GREATER THAN 1.7 : 1.
2. 7/32 MAX. PANEL THICKNESS.
3. FINISH; OUTER SHELL & ELEMENT NICKEL PLATE, CENTER CONDUCTOR GOLD OVER NICKEL PLATE.

UNLESS OTHERWISE SPECIFIED			DRAWN		TED	TED MANUFACTURING CORP.		
ALL DIMENSIONS ARE BEFORE PLATE DIMENSIONS ARE IN INCHES TOLERANCES ON			Steve	2/26/2015			TITLE	
FRACTIONS    DECIMALS 3PL    DECIMALS 2PL ± 1/64            ± .005            ±.010			CHECKED	2/27/2015	MONOPOLE ANTENNA 978 MHz			
SURFACE TEXTURE: REMOVE ALL BURRS & SHARP EDGES			SW				SIZE A3	DWG NO 104-17
THREADS: PLATING ALLOWANCES ARE .0002 MIN. .0003 MAX.			APPROVED	2/27/2015				
MATERIAL:			SW	2/27/2015			SCALE:	
			AREA: 7.775 in <sup>2</sup>		SHEET 1 OF 1			
			MASS: 23.345 g					