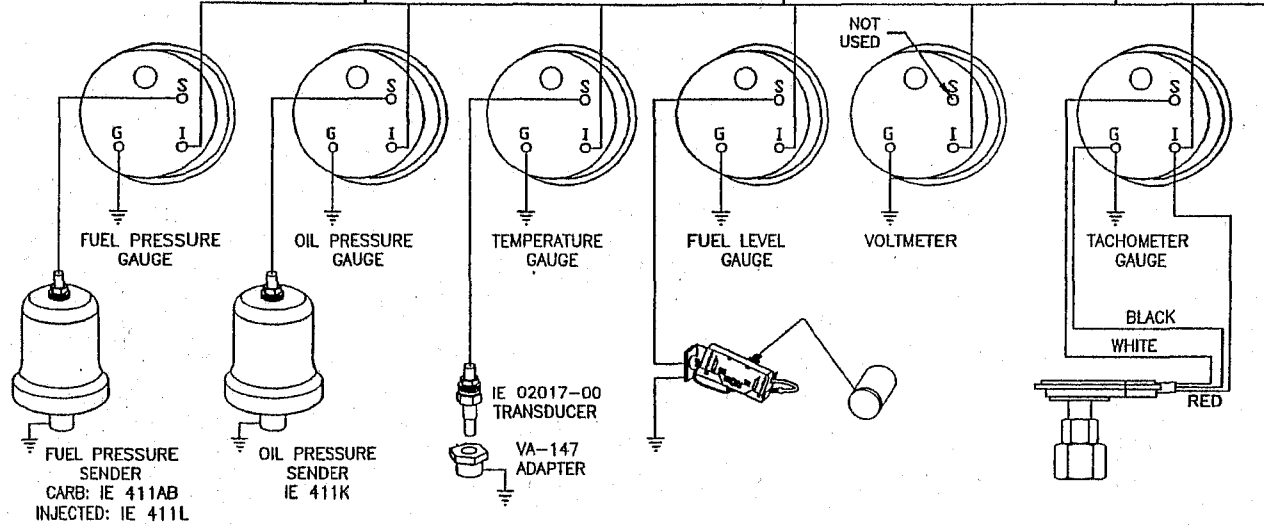
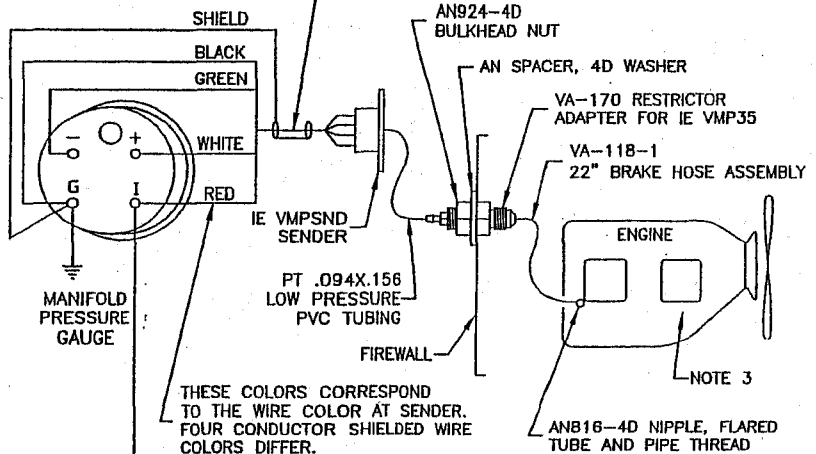
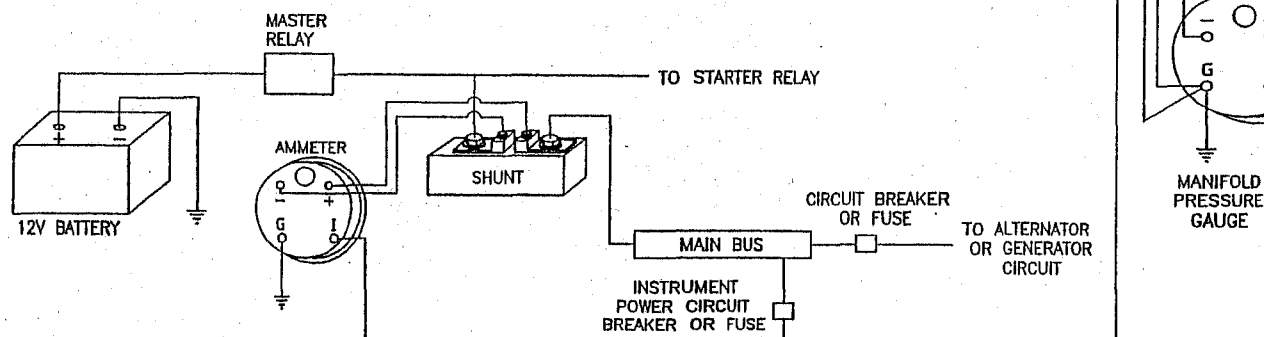


REV	DESCRIPTION	DATE	APPROVED
RO	APPROVED FOR PRODUCTION	9-7-99	AMH
R1	ADDED "NOT USED" NOTE TO VOLTMETER	5-10-00	PJR
R2	ADDED MANIFOLD PRESSURE DETAILS.	6-22-00	PJR
R3	ADDED CHT AND EGT DETAILS.	7-7-00	PJR
R4	ADDED WIRE & ROTARY SWITCH P/N'S APPROVED FOR PRODUCTION	7-18-00	PJR
R5	ADDED "AN SPACER 4D" APPROVED FOR PRODUCTION	11-30-01	PJR



- NOTES:
- IF USING AN E.I. ROTARY SWITCH, CONNECT VIOLET TO THE POSITIVE INSTRUMENT POST & GRAY TO NEGATIVE. IF NOT USING SWITCH, CONNECT YELLOW TO POSITIVE & RED TO NEGATIVE.
  - #6 STUD POST TERMINALS TYPICAL OF ALL INSTRUMENTS.
  - CHT PORTS LOCATED BELOW & INBOARD OF BOTTOM SPARK PLUGS.
  - USED ONLY FOR MULTI-CYLINDER PROBES. WHEN INSTALLING A PROBE ON A SINGLE CYLINDER, PROBE CABLE CONNECTS DIRECTLY TO INSTRUMENT.
  - KEEP SHIELD OVER AS MUCH OF THE WIRE AS POSSIBLE.

	<b>VAN'S AIRCRAFT, INC.</b> PO BOX 160 NORTH PLAINS, OR 97133	
	PART DESCRIPTION: GAUGE INSTALL MATERIAL SPECIFICATION: N/A	
DATE DRAWN: 9-7-99	UNITS: INCHES	DRAWING (PART) NO.: GAUGE INSTALLATION
DRAWN BY: ANDREW HANNA TOLERANCES: N/A (UNLESS OTHERWISE SPECIFIED)	SCALE: FULL SCALE	
PATH\FILENAME: F:\Z OTHER\INSTALL DRAWINGS\GAUGE INSTALLATION.DWG A-SIZE ORIGINAL		